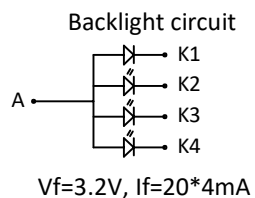


PIN	SYMBOL
1	VCC
2	GND
3	LEDA
4	RESET
5	CS
6	RS
7	WR
8	RD
9	DB0
10	DB1
11	DB2
12	DB3
13	DB4
14	DB5
15	DB6
16	DB7
17	DB8
18	DB9
19	DB10
20	DB11
21	DB12
22	DB13
23	DB14
24	DB15

SPECIFICATIONS:

- | | |
|---------------------------|------------------------|
| 1. DISPLAY TYPE: | 2.4" / IPS / QVGA |
| 2. DRIVE IC: | ST7789V-G4 |
| 3. OPERATING TEMPERATURE: | -20 ~ 70°C |
| 4. STORAGE TEMPERATURE: | -30 ~ 80°C |
| 5. VIEWING ANGLE: | IPS |
| 6. BACKLIGHT: | 4 LED/PARALLEL/20mA |
| 7. CUSTOMER PART NO.: | BOCEN STANDARD PRODUCT |



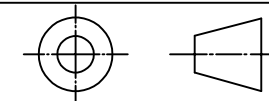
BOCEN DISPLAY TECHNOLOGY CO., LTD.

DESIGNED BY: Shawn

BF2424-01

VERSION: 1.0

CHECKED BY: William



NO.: 1 OF 1

APPROVED BY: Rio

UNIT: mm

Website: <http://www.bocentech.com>

DATE: 2019-12-6