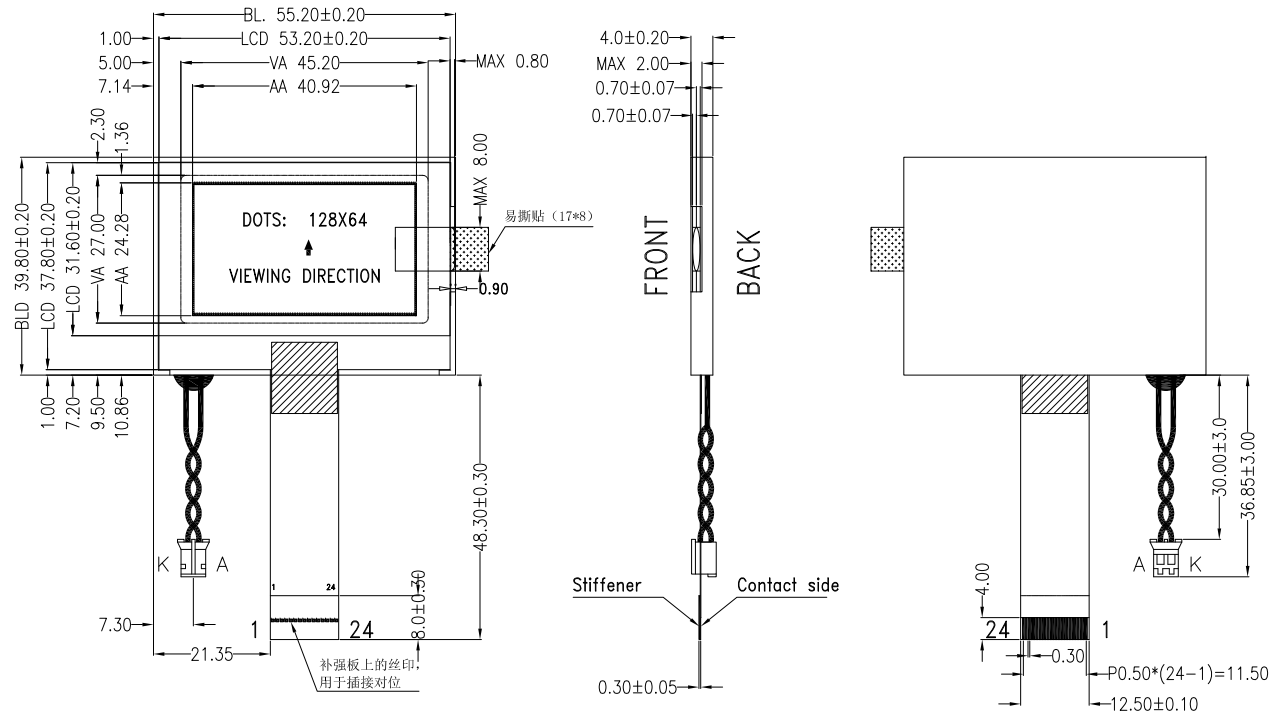


Version

1.0

2012-11-30

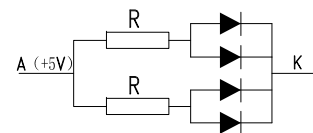
New Issue



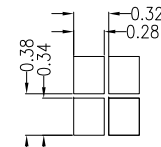
PIN	SYMBOL	PIN	SYMBOL
1	NC	13	D6
2	/CS1	14	D7
3	/RES	15	VDD
4	A0	16	VSS
5	/WR(R/W)	17	VSS
6	/RD(E)	18	V0
7	D0	19	XVO
8	D1	20	VM
9	D2	21	VG
10	D3	22	C86
11	D4	23	P/S
12	D5	24	NC

SPECIFICATIONS:

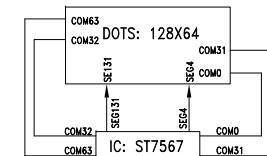
- | | |
|---------------------------|---------------------------------------|
| 1. DISPLAY TYPE: | FSTN / B-W / POSITIVE / TRANSFLECTIVE |
| 2. DRIVE IC: | ST7567 |
| 3. OPERATING VOLTAGE: | VOP = 9.0 V, VDD = 3.0V |
| 4. OPERATING TEMPERATURE: | -20 ~ +70°C |
| 5. STORAGE TEMPERATURE: | -30 ~ +80°C |
| 6. DRIVE MODE: | 1/65 DUTY, 1/9 BIAS |
| 7. VIEWING ANGLE: | 6 O'CLOCK |
| 8. BACKLIGHT: | 4PCS WHITE LED, IF = 60mA, VF = 5.0V |
| 9. CUSTOMER PART NO.: | BOCEN STANDARD PRODUCT |



BACKLIGHT CIRCUIT



SCALE:20:1



COM & SEG LAYOUT

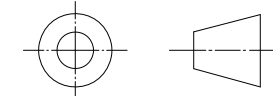
BOCEN DISPLAY TECHNOLOGY CO., LTD.

DESIGNED BY: Shawn

BG12864-13

VERSION: 1.0

CHECKED BY: William



NO.: 1 OF 1

APPROVED BY: Rio

UNIT: mm

Website: <http://www.bocentech.com>

DATE: 2012-11-30