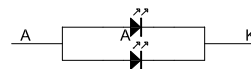
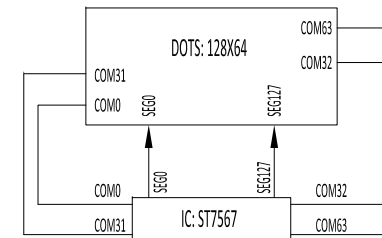


SCALE: 20: 1



BLACKLIGHT CIRCUIT

PIN	SYMBOL
1	CS1
2	RST
3	A0
4	D6(SCK)
5	D7(SDA)
6	VDD
7	VSS
8	NC
9	NC
10	V0
11	XV0
12	NC
13	NC
14	NC
15	NC
16	NC
17	NC
18	VG
19	NC
20	NC
21	A
22	K



COM & SEG LAYOUT

SPECIFICATIONS:

- | | |
|---------------------------|--------------------------------------|
| 1. DISPLAY TYPE: | STN / Y-G / POSITIVE / TRANSMISSIVE |
| 2. DRIVE IC: | ST7567 |
| 3. CONNECTOR: | FPC |
| 4. OPERATING VOLTAGE: | VOP = 9.0 V, VDD = 3.3V |
| 5. OPERATING TEMPERATURE: | -10 ~ +60°C |
| 6. STORAGE TEMPERATURE: | -20 ~ +70°C |
| 7. DRIVE MODE: | 1/65 DUTY, 1/9 BIAS |
| 8. VIEWING ANGLE: | 6 O'CLOCK |
| 9. BACKLIGHT: | GREEN LED, 2PCS, IF =30mA, VBL =3.0V |
| 10. CUSTOMER PART NO.: | BOCEN STANDARD PRODUCT |

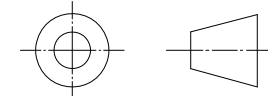
BOCEN DISPLAY TECHNOLOGY CO., LTD.

DESIGNED BY: Shawn

BG12864-07

VERSION: 1.0

CHECKED BY: William



NO.: 1 OF 1

APPROVED BY: Rio

UNIT: mm

Website: <http://www.bocentech.com>

DATE: 2013-07-30